

Headquarters • R&D • State-of-the-Art Facility Up to 669,101 SF Sublease Available



669,101 SF SUBLEASE
24500 Northwest Freeway (Highway 290)
Houston, Texas



CONCORDIS
REAL ESTATE

ConcordisRyland

7000 Regency Square, Suite 190
Houston, Texas 77036
713.952.5066
713.952.7230.fax

Ed Ryland, Jr., CCIM
President & CEO

George N. Wyche, Jr., Esq.
Executive Vice President
edryland@concordisryland.com
gwyche@concordisryland.com
www.concordisryland.com



Andrew R. Spence
713/877-1464

andy_spence@cushwake.com

Scott Wegmann
713/877-8261

scott_wegmann@cushwake.com

Tim D. Relyea
713/877-8752

tim_relyea@cushwake.com

Roger Gage
408/572-4112

roger_gage@cushwake.com

24500 Northwest Freeway (Highway 290)
Houston, Texas



Food Court



**24500 Northwest Freeway (Highway 290)
Houston, Texas**



building entrance

**east side
of campus**



building entrance

**west side
of campus**



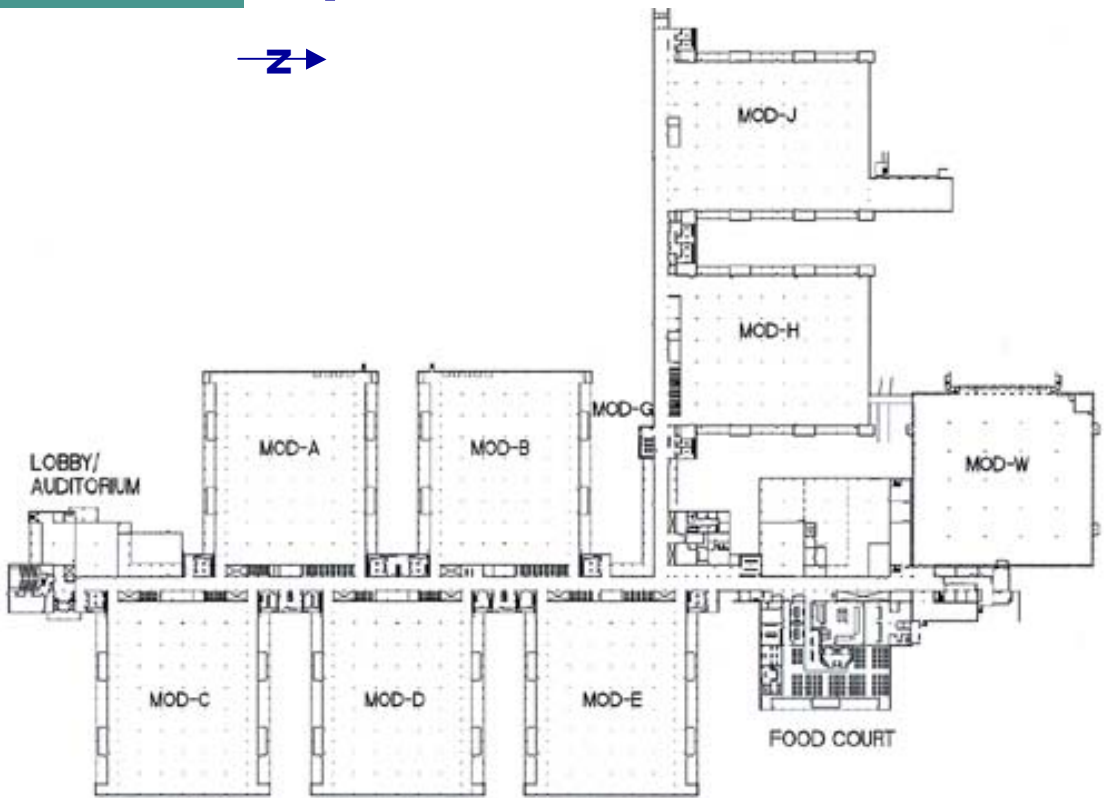
Location Maps

24500 Northwest Freeway (Highway 290) Houston, Texas



All information contained herein is from sources deemed reliable and is submitted without any guarantees, warranties or representations as to the completeness or accuracy thereof. Neither Cushman & Wakefield of Texas, Inc., nor ConcordisRyland assume any liability for errors or omissions, change of price or other conditions including, without limitation, prior sale, lease, or withdrawal without notice. This presentation is for information purposes only and under no circumstances whatsoever is to be deemed a contract or any other form of binding commitment.

Site Layout



24500 Northwest Freeway (Highway 290)
Houston, Texas

Building Facts

- ◆ Entire facility - 669,101 SF
- ◆ Sublease term through 05/31/09
- ◆ 1,932 parking spaces (2.78/1,000 SF)
- ◆ 2,600 tons chilled water HVAC capacity
- ◆ 8 functional modules
- ◆ 2,000 kW generator capacity
- ◆ 1,200 kVA UPS capacity
- ◆ 50,000 gallon sewer plant
- ◆ 35 kV dual-feed electrical
- ◆ 10,000-connection telephone switch

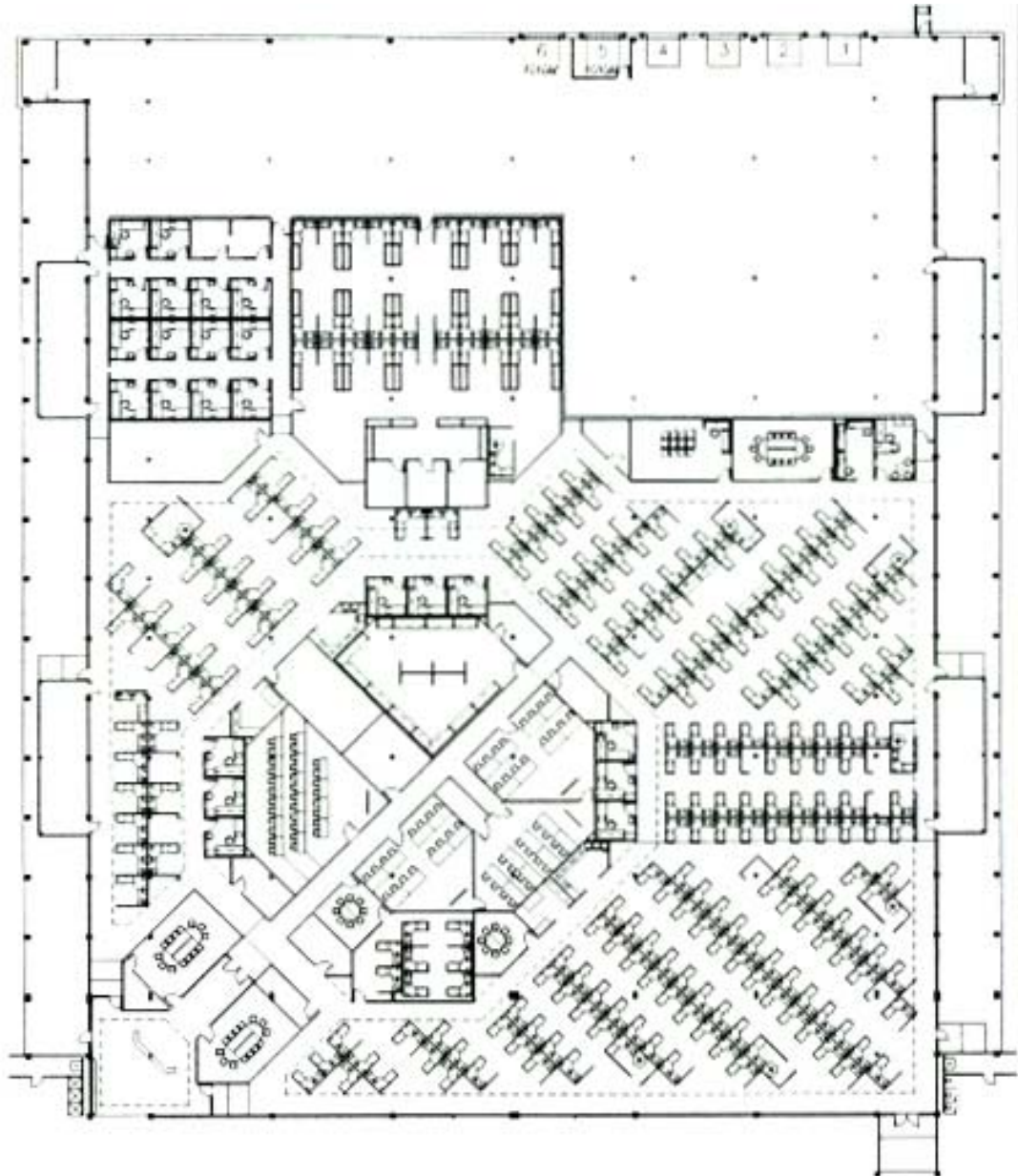
Site Amenities

- ◆ Surface parking with covered walkways
- ◆ Full-service cafeteria with seating for 380 people
- ◆ Conference center
- ◆ Fitness center
- ◆ Credit union
- ◆ Employee store
- ◆ Security control center

669,101 SF

24500 Northwest Freeway (Highway 290)
Houston, Texas

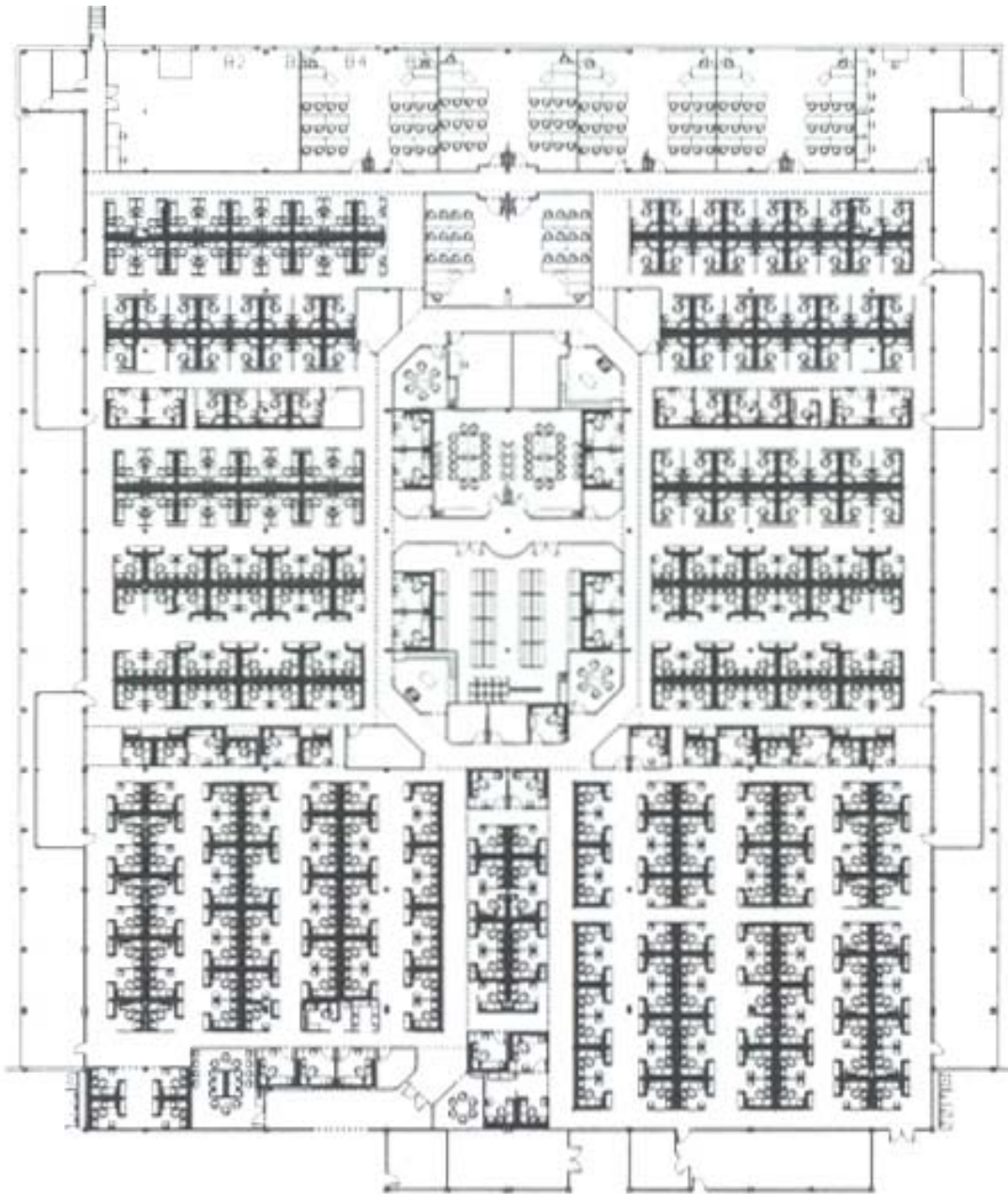
MODULE "A"



669,101 SF

24500 Northwest Freeway (Highway 290)
Houston, Texas

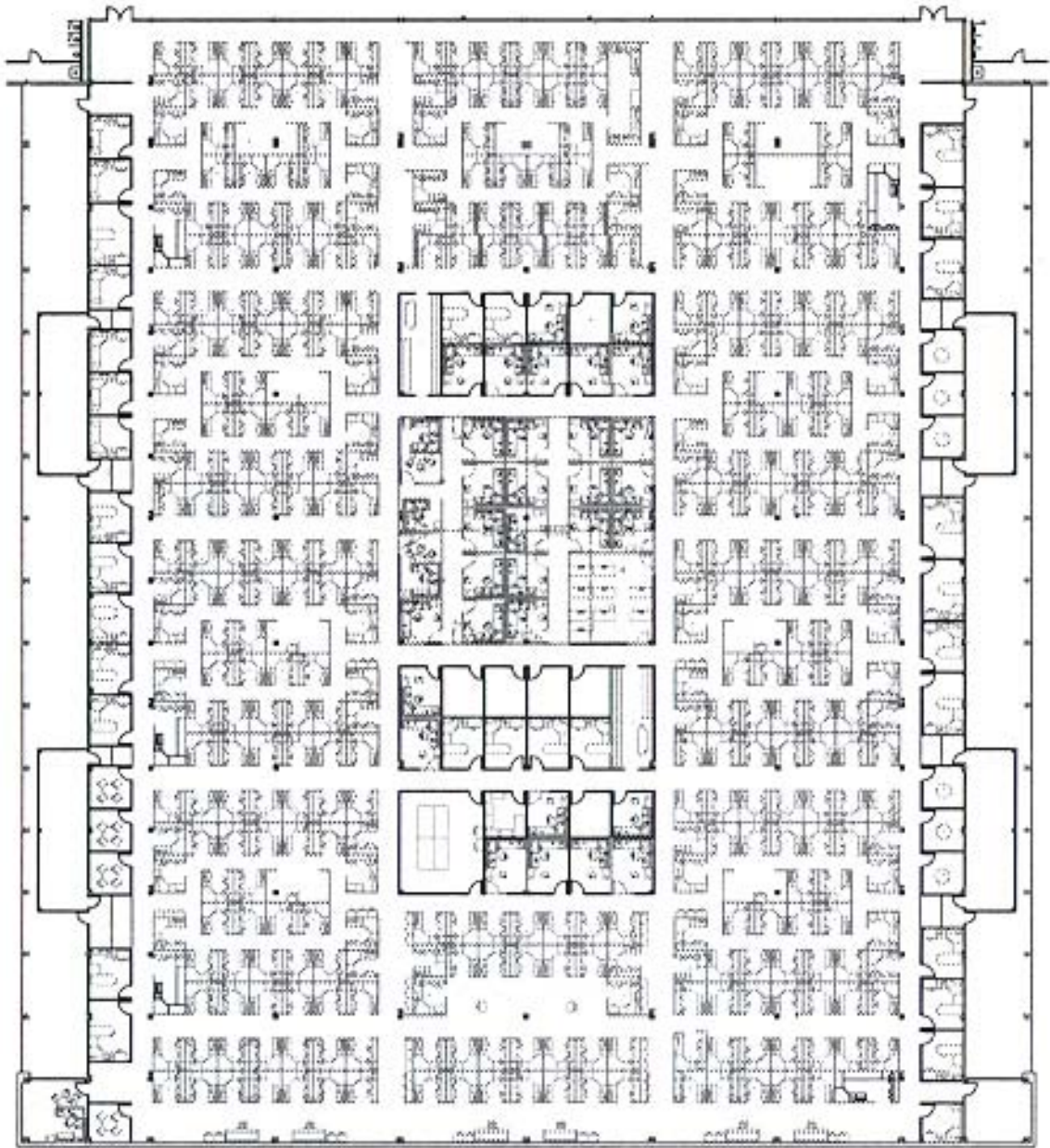
MODULE "B"



669,101 SF

24500 Northwest Freeway (Highway 290)
Houston, Texas

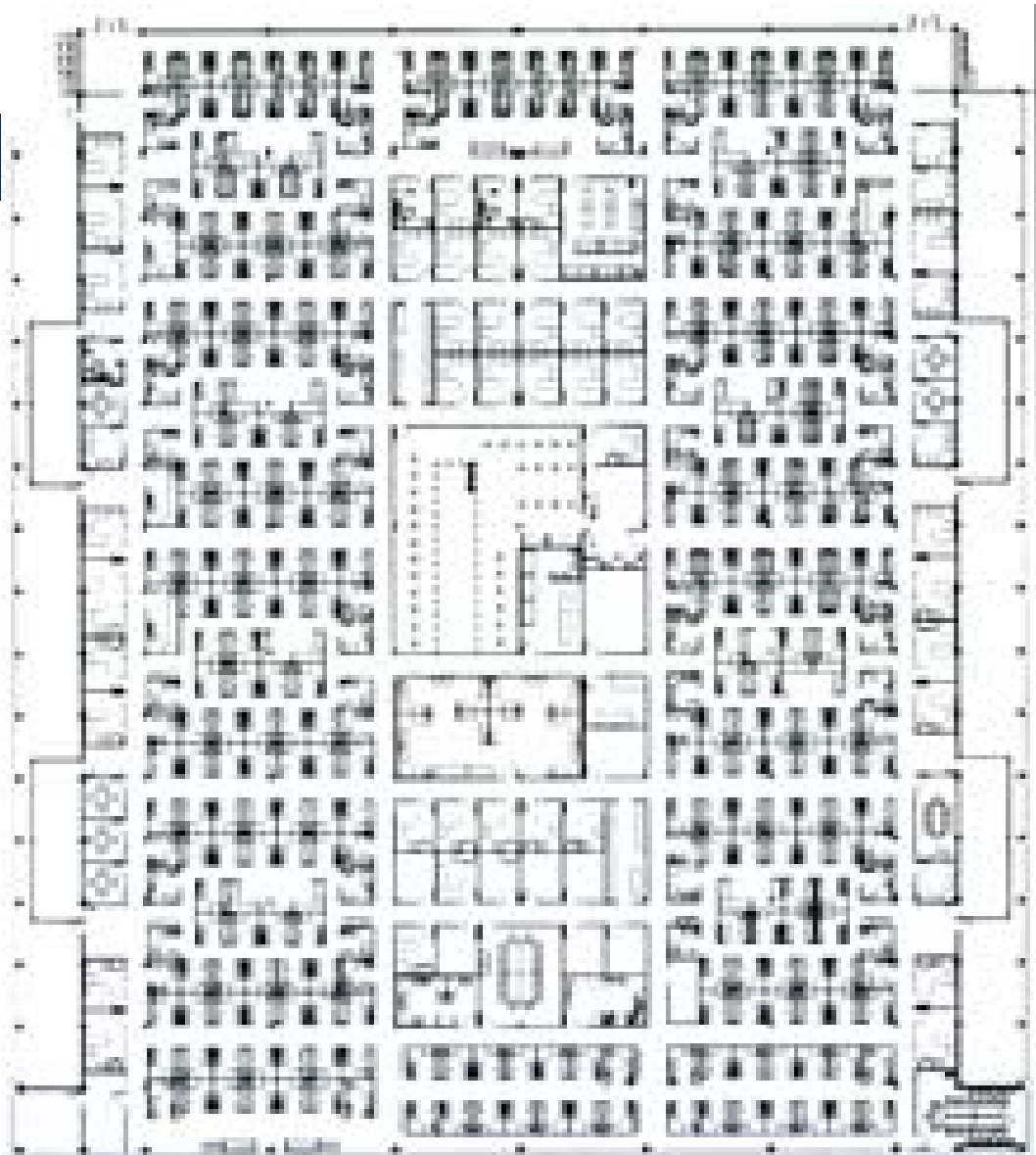
MODULE "C"



669,101 SF

24500 Northwest Freeway (Highway 290)
Houston, Texas

MODULE "D"



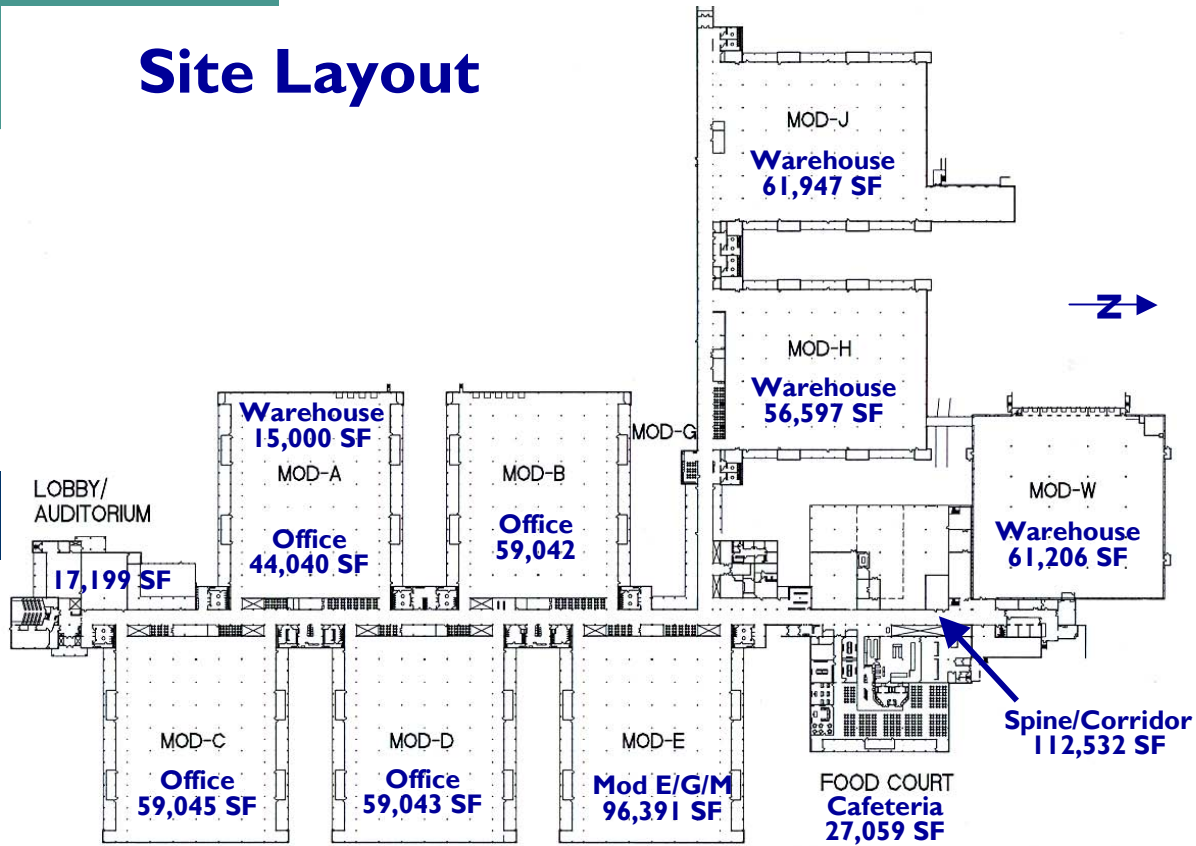
669,101 SF

24500 Northwest Freeway (Highway 290)
Houston, Texas

MODULE "E"



Site Layout



Building Facts

- ◆ Entire facility - 669,101 SF
- ◆ Sublease term through 05/31/09
- ◆ 1,932 parking spaces (2.78/1,000 SF)
- ◆ 2,600 tons chilled water HVAC capacity
- ◆ 8 functional modules
- ◆ 2,000 kW generator capacity
- ◆ 1,200 kVA UPS capacity
- ◆ 50,000 gallon sewer plant
- ◆ 35 kV dual-feed electrical
- ◆ 10,000-connection telephone switch

Site Amenities

- ◆ Surface parking with covered walkways
- ◆ Full-service cafeteria with seating for 380 people
- ◆ Conference center
- ◆ Fitness center
- ◆ Credit union
- ◆ Employee store
- ◆ Security control center